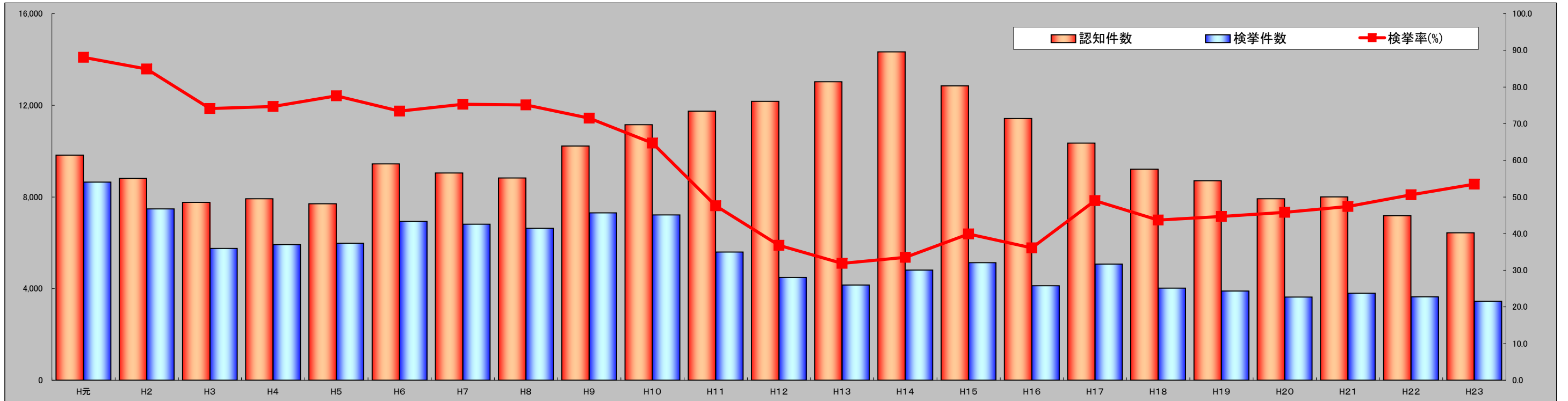
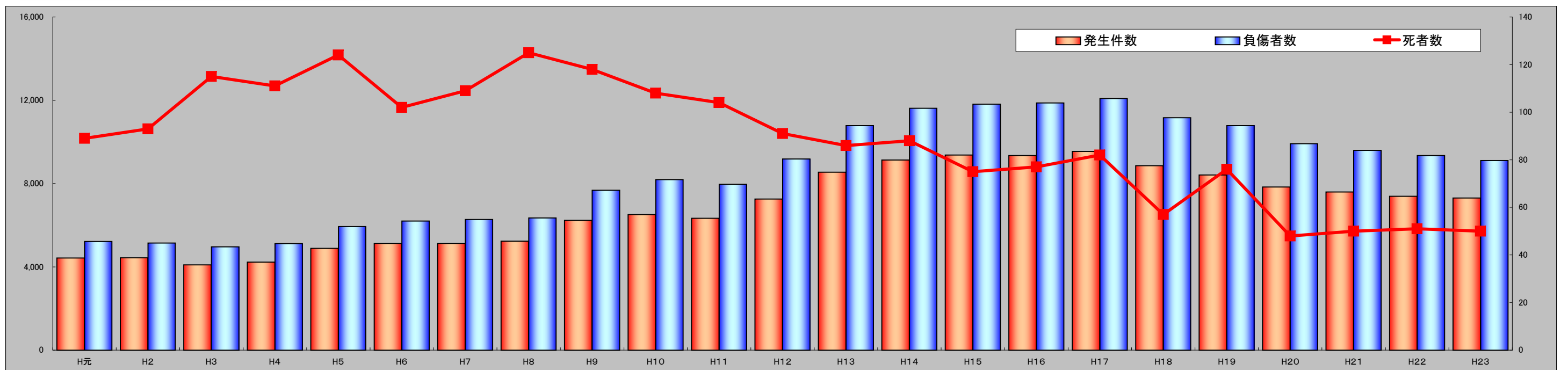


## ■ 刑法犯の認知・検挙状況の推移



	H元	H2	H3	H4	H5	H6	H7	H8	H9	H10	H11	H12	H13	H14	H15	H16	H17	H18	H19	H20	H21	H22	H23
認知件数	9,823	8,812	7,761	7,924	7,705	9,442	9,049	8,832	10,223	11,151	11,749	12,171	13,029	14,331	12,852	11,423	10,352	9,214	8,708	7,924	8,003	7,179	6,436
検挙件数	8,652	7,481	5,752	5,922	5,981	6,931	6,814	6,631	7,309	7,216	5,597	4,485	4,152	4,808	5,130	4,125	5,069	4,024	3,890	3,630	3,795	3,636	3,441
検挙率(%)	88.1	84.9	74.1	74.7	77.6	73.4	75.3	75.1	71.5	64.7	47.6	36.8	31.9	33.5	39.9	36.1	49.0	43.7	44.7	45.8	47.4	50.6	53.5
検挙人員	2,818	2,483	1,988	1,739	2,006	2,262	2,114	2,050	2,284	2,704	2,438	2,828	2,540	2,941	2,958	2,635	2,887	2,542	2,356	2,445	2,605	2,645	2,386

## ■ 交通事故発生状況等の推移



	H元	H2	H3	H4	H5	H6	H7	H8	H9	H10	H11	H12	H13	H14	H15	H16	H17	H18	H19	H20	H21	H22	H23
発生件数	4,423	4,437	4,093	4,227	4,888	5,131	5,125	5,234	6,232	6,511	6,332	7,253	8,546	9,134	9,368	9,348	9,542	8,858	8,412	7,832	7,593	7,393	7,308
負傷者数	5,214	5,146	4,962	5,116	5,932	6,202	6,271	6,351	7,678	8,190	7,968	9,183	10,779	11,616	11,813	11,874	12,090	11,159	10,786	9,915	9,590	9,343	9,108
死者数	89	93	115	111	124	102	109	125	118	108	104	91	86	88	75	77	82	57	76	48	50	51	50